



**PORT ST. LUCIE
POLICE
DEPARTMENT**

Would you like to help us?

Below are ways you can help deter crime in your neighborhood!

CRIME PREVENTION TIPS

Prevent a Vehicle Burglary

- Secure all vehicle doors.
- Ensure all windows are rolled up entirely and secured.
- Remove all items from plain view of any passer by.
- Activate vehicle alarm system.
- Promote good natural surveillance by always parking in a well lit location and never parking smaller vehicles between two larger vehicles.
- Use our online interactive public mapping for any additional activity occurring in this area at www.CrimeReports.com (access the website via www.pslpd.us).
- Report all suspicious activity to police immediately.

If you want to remain anonymous, please contact:

**TREASURE COAST
CRIME STOPPERS**

www.tcwatch.org
or call (800)273-8477

PORT ST. LUCIE POLICE DEPT.

121 SW Port St. Lucie Blvd Bldg. C
Port St. Lucie, FL 34884
(772)871-5000

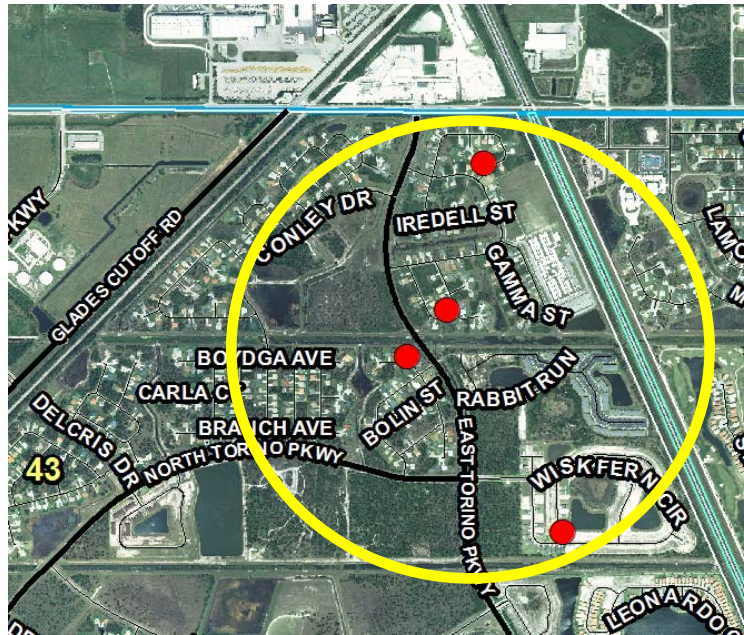
EMERGENCY CALLS—DIAL 911

**NEIGHBORHOOD
CRIME NOTIFICATION**



WE WANT YOU TO KNOW:

The below map depicts burglary incidents that have occurred within an approximate .42 mile radius of NW East Paden Circle from **April 29th—May 3rd, 2014.**



5 Auto Burglaries

- 4 Incidents involved unlocked / unsecured vehicles
- 1 Incident involved a smashed window
- Occurred in the overnight hours
- Items stolen include firearms and loose change left in vehicles

Our reports indicate the person or people responsible for committing these crimes might match the following descriptions:

- **An individual reported seeing a dark-skinned Black Male with a thin build (possibly with dreadlocks), wearing dark clothing and red sneakers walking between her residence and a vacant residence in the late night hours**