



**PORT ST. LUCIE
POLICE
DEPARTMENT**

Would you like to help us?

Below are ways you can help deter crime in your neighborhood!

CRIME PREVENTION TIPS

Prevent a Vehicle Burglary

- Secure all vehicle doors.
- Ensure all windows are rolled up entirely and secured.
- Remove all items from plain view of any passer by.
- Activate vehicle alarm system.
- Promote good natural surveillance by always parking in a well lit location and never parking smaller vehicles between two larger vehicles.
- Use our online interactive public mapping for any additional activity occurring in this area at www.CrimeReports.com (access the website via www.pslpd.us).
- Report all suspicious activity to police immediately.

If you want to remain anonymous, please contact:

**TREASURE COAST
CRIME STOPPERS**

www.tcwatch.org
or call (800)273-8477

PORT ST. LUCIE POLICE DEPT.

121 SW Port St. Lucie Blvd Bldg. C
Port St. Lucie, FL 34884
(772)871-5000

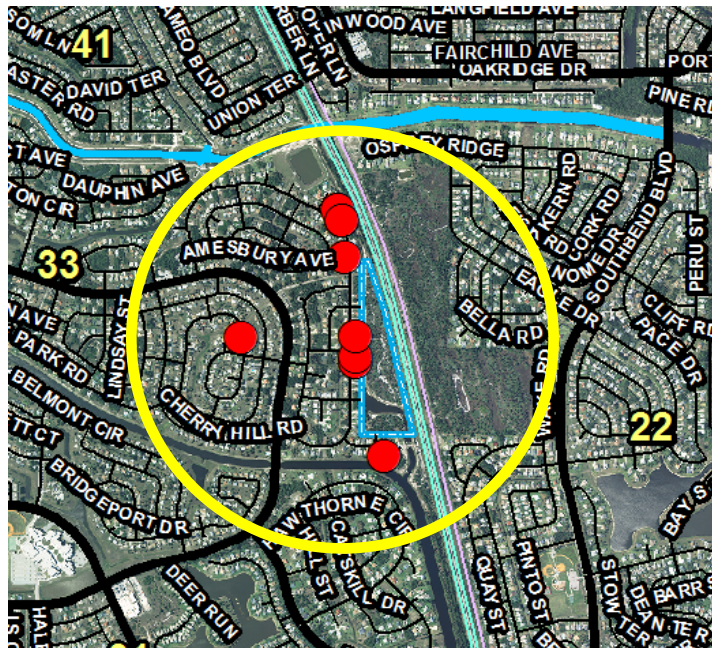
EMERGENCY CALLS—DIAL 911

**NEIGHBORHOOD
CRIME NOTIFICATION**



WE WANT YOU TO KNOW:

The below map depicts burglary incidents that have occurred within an approximate .40 mile radius of SW Ann Arbor Road from **September 30th—October 5th, 2013.**



9 Auto Burglaries

- 8 Incidents involved unlocked / unsecured vehicles
- 1 Incident involved a cut lock to a flatbed trailer
- Occurred in the overnight hours
- Primary items stolen include currency, small electronics, and lawn maintenance equipment.



**PORT ST. LUCIE
POLICE
DEPARTMENT**

Would you like to help us?

Below are ways you can help deter crime in your neighborhood!

CRIME PREVENTION TIPS

Prevent a Residential Burglary

- Secure all doors with high grade dead bolt locking system.
- Secure all window locks.
- Install exterior lights and position them to illuminate entire structure.
- Promote good natural surveillance by keeping all landscape trimmed away from doors and windows.
- Activate a centrally monitored alarm system.

Prevent a Vehicle Burglary

- Secure all vehicle doors.
- Ensure all windows are rolled up entirely and secured.
- Remove all items from plain view of any passer by.
- Activate vehicle alarm system.
- Promote good natural surveillance by always parking in a well lit location and never parking smaller vehicles between two larger vehicles.
- Use our online interactive public mapping for any additional activity occurring in this area at www.CrimeReports.com (access the website via www.pslpd.us).

If you want to remain anonymous, please contact:

**TREASURE COAST
CRIME STOPPERS**

www.tcwatch.org
or call (800)273-8477

PORT ST. LUCIE POLICE DEPT.

121 SW Port St. Lucie Blvd Bldg. C
Port St. Lucie, FL 34884
(772)871-5000

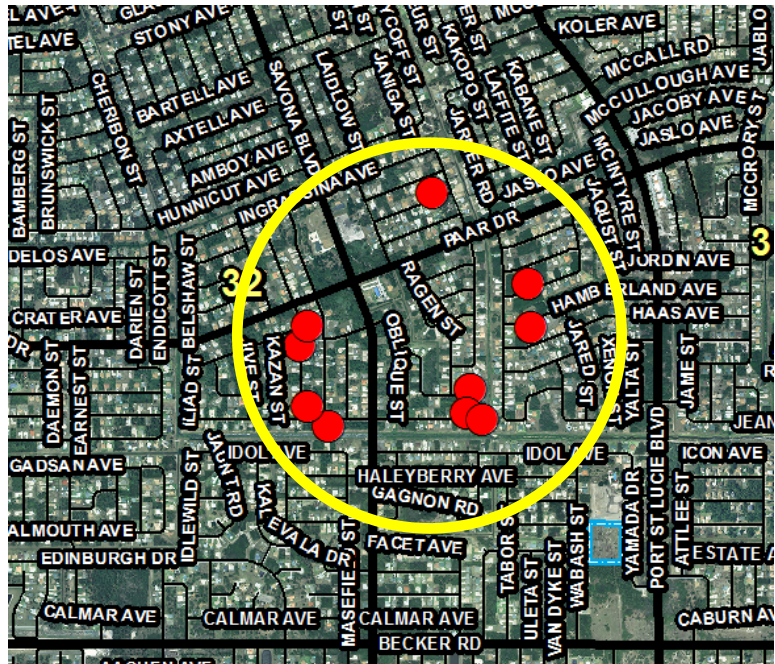
EMERGENCY CALLS—DIAL 911

**NEIGHBORHOOD
CRIME NOTIFICATION**



WE WANT YOU TO KNOW:

The below map depicts burglary incidents that have occurred within an approximate .35 mile radius of SW Tuscol Street from **September 20th—October 7th, 2013**



9 Auto Burglaries

- 8 Incidents involved unlocked / unsecured vehicles
- 1 Incident involved a broken window latch
- Occurred primarily in the overnight hours
- Primary items stolen include loose change and small electronics

1 Residential Burglary

- 1 Incidents involved bicycles taken from an unsecured garage