



**PORT ST. LUCIE  
POLICE  
DEPARTMENT**

*Would you like to help us?*

Below are ways you can help deter crime in your neighborhood!

**CRIME PREVENTION TIPS**

**Prevent a Vehicle Burglary**

- Secure all vehicle doors.
- Ensure all windows are rolled up entirely and secured.
- Remove all items from plain view of any passer by.
- Activate vehicle alarm system.
- Promote good natural surveillance by always parking in a well lit location and never parking smaller vehicles between two larger vehicles.
- Use our online interactive public mapping for any additional activity occurring in this area at [www.CrimeReports.com](http://www.CrimeReports.com) (access the website via [www.pslpd.us](http://www.pslpd.us)).
- Report all suspicious activity to police immediately.

*If you want to remain anonymous, please contact:*

**TREASURE COAST  
CRIME STOPPERS**

[www.tcwatch.org](http://www.tcwatch.org)  
or call (800)273-8477

**PORT ST. LUCIE POLICE DEPT.**

121 SW Port St. Lucie Blvd Bldg. C  
Port St. Lucie, FL 34884  
(772)871-5000

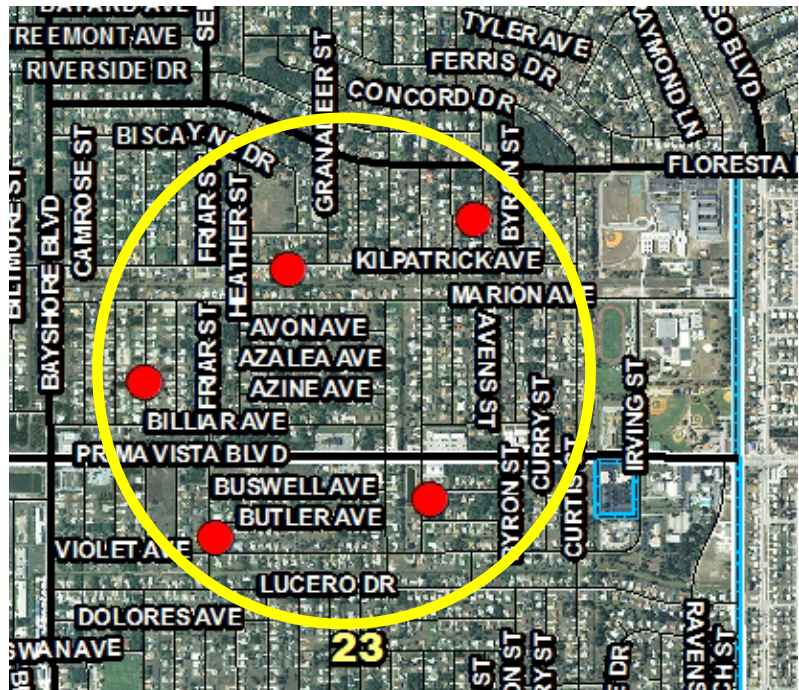
**EMERGENCY CALLS—DIAL 911**

**NEIGHBORHOOD  
CRIME NOTIFICATION**



**WE WANT YOU TO KNOW:**

The below map depicts burglary incidents that have occurred within an approximate .40 mile radius of SW Dolores Ave from December 17th, 2013 —January 6th, 2014.



**5 Auto Burglaries**

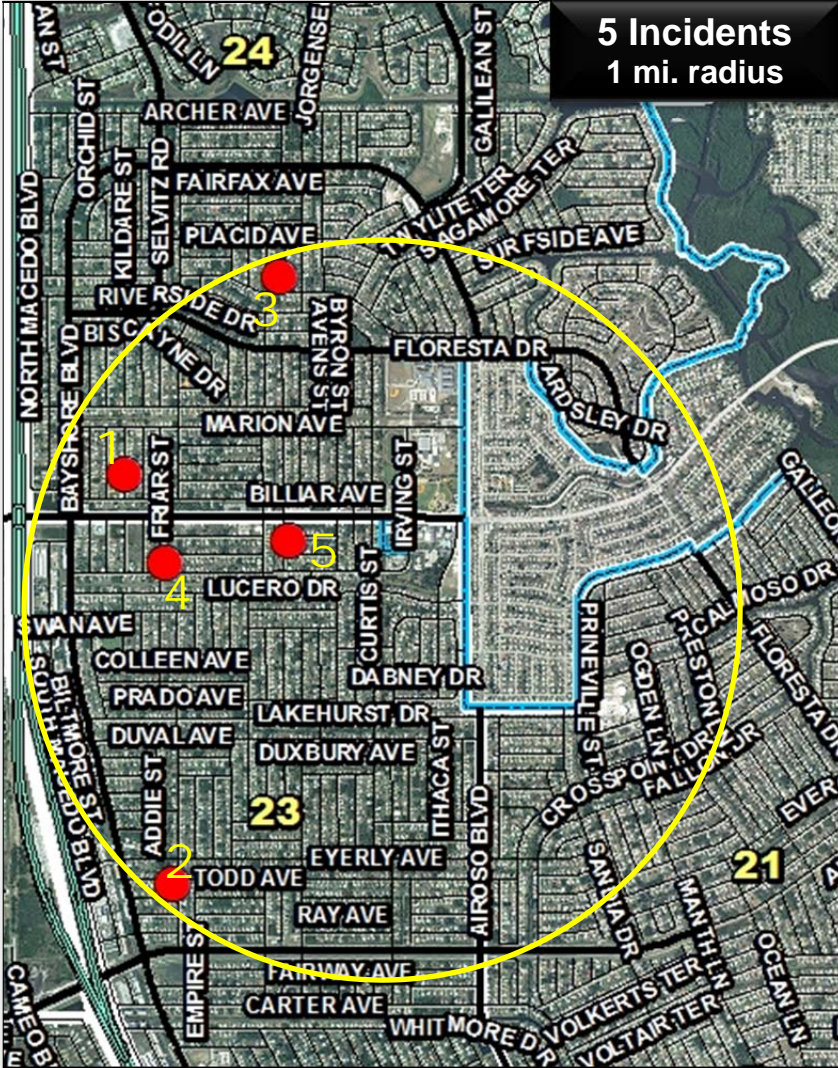
- No signs of forced entry - 5 Incidents
  - 2 incidents involved theft of lawn equipment from an unsecured bed of a pick-up truck.
- Occurring primarily in the afternoon/overnight hours
- Items Stolen: lawn equipment, stereo, purse

**Our reports indicate the person or people responsible for committing these crimes might match the following descriptions:**

- **White Male, approx. 5'10", 180 lbs. with left ear pierced**
- **Driving a blue/silver mini-van (with bungee cord holding down the back door)**



**SERIES – LAWN EQUIPMENT THEFTS – AUTO BURGLARIES**  
**Zones 23 & 24**  
**December 17<sup>th</sup> – December 30<sup>th</sup>, 2013**



**MODUS OPERANDI**

**5 Incidents – No signs of force**  
 Primarily occurring during the **morning/afternoon hrs.**  
**Primary Target:** Lawn equipment (leaf blowers, trimmers) from the bed of pick-up trucks or trailers  
**2 of the 5 Incidents – Victims were completing yard work in the area and left the lawn equipment unsecured.**  
**Latent Prints:** None indicated

**SUSPECT INFORMATION**

**Case 2013-23976 (400 BLK OF SW Friar St.)**  
 On 12/29/13 at approx. 1525 hours, as the victim was taking a shower, he heard his door bell ringing and knocking at his front door. Upon exiting the shower and looking out the front window, the victim observed an **unknown W/M (approx. 5'10", 180 lbs., left ear pierced)** walking around his work truck that had an open trailer and lawn mower attached to it. He then observed the suspect walk to the side of the residence and return to the victim's work truck. The suspect was then **observed looking into the camper top window of the truck and turning the handles to the window which were locked.** After getting dressed, the victim exited the residence and confronted the suspect who stated that he was trying to get a phone number of the victim. The suspect **fled the area in a blue/silver mini-van** (unknown make/model, no tag # retrieved); **a bungee cord was holding down the back door of the mini-van.**

NO	CASE	DATE	TIME	DOW	ADDRESS	M/O	STOLEN
1	2013-23479	12/17-12/21	1200-1600	TUE-SAT	100 BLOCK OF NW AILEEN ST	Unsecured - No Force	<b>Stihl hedge trimmer and leaf blower</b> <i>(from bed of pick-up truck)</i>
2	2013-23389	12/20/13	0900-0930	FRI	600 BLOCK OF SW TODD AVE	Unsecured - No Force; <i>victim was doing yard work in the area during the time of the theft</i>	<b>2 Stihl Leaf Blowers</b> <i>(from bed of pick-up truck)</i>
3	2013-24005	12/27-12/30	1700-0800	FRI-MON	500 BLOCK OF NW COLONIAL ST	Unlocked trailer door- No Force	<b>Stihl edge trimmer, leaf blower, 2 chain saws, 2 weed eaters</b>
4	2013-23976	12/29/13	1525-1539	SUN	400 BLOCK OF SW FRIAR ST	No Force - suspect observed checking the victim door handles; <b>SUSPECT: W/M, approx. 5'10", 180 lbs., left ear pierced, blue/silver mini-van</b>	<b>Nothing</b> - In-progress ( <i>Attempt to victim's work pick-up truck - containing lawn equip.</i> ) - Interrupted by victim.
5	2013-24012	12/30/13	1000-1023	MON	400 BLOCK OF SW DORCHESTER ST	Unsecured - No Force; <i>victim was doing yard work in the area during the time of the theft</i>	<b>Echo Leaf Blower and edge trimmer</b> <i>(from bed of pick-up truck)</i> - <i>the victim's trailer tag was missing, but the victim was unsure if it was stolen or if it fell off.</i>