



**PORT ST. LUCIE  
POLICE  
DEPARTMENT**

***Would you like to help us?***

Below are ways you can help deter crime in your neighborhood!

**CRIME PREVENTION TIPS**

**Prevent a Vehicle Burglary**

- Secure all vehicle doors.
- Ensure all windows are rolled up entirely and secured.
- Remove all items from plain view of any passer by.
- Activate vehicle alarm system.
- Promote good natural surveillance by always parking in a well lit location and never parking smaller vehicles between two larger vehicles.

**Prevent a Residential Burglary**

- Secure all doors with high grade dead bolt locking system.
- Secure all window locks.
- Install exterior lights and position them to illuminate entire structure.
- Promote good natural surveillance by keeping all landscape trimmed away from doors and windows.
- Activate a centrally monitored alarm system.
- Use our online interactive public mapping for any additional activity occurring in this area at [www.CrimeReports.com](http://www.CrimeReports.com) (access the website via [www.pslpd.us](http://www.pslpd.us)).
- Report all suspicious activity to police immediately.

*If you want to remain anonymous, please contact:*

**TREASURE COAST  
CRIME STOPPERS**

[www.tcwatch.org](http://www.tcwatch.org) or call (800)273-8477

**PORT ST. LUCIE POLICE DEPT.**

121 SW Port St. Lucie Blvd Bldg. C  
Port St. Lucie, FL 34884  
(772)871-5000

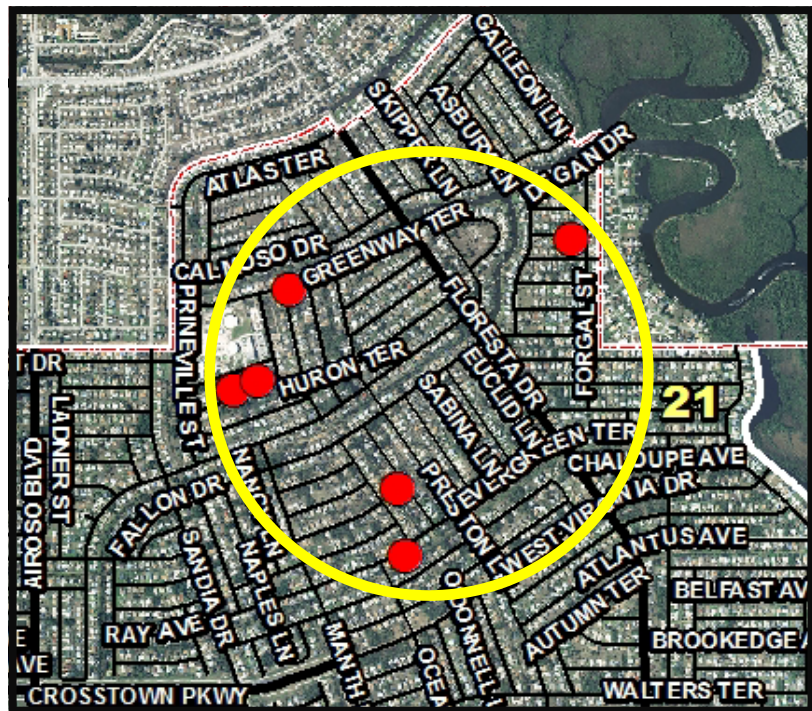
**EMERGENCY CALLS—DIAL 911**

**NEIGHBORHOOD  
CRIME NOTIFICATION**



**WE WANT YOU TO KNOW:**

The below map depicts burglary incidents that have occurred within an approximate .45 mile radius in the area of SE Huron Ter. from June 4th - June 16th, 2012.



**2 Auto Burglaries**

- Unlocked/Unsecured Vehicles
- Occurring primarily in the overnight hours
- Items Stolen: Fishing equipment

**4 Residential Burglaries**

- Windows broken—2 incidents
- No signs of forced entry - 2 incidents
- Occurring primarily in the afternoon/late night hours
- Items Stolen: Golf club set, Android Tablet, and Prescription pills