



## PORT ST. LUCIE POLICE DEPARTMENT

*Would you like to help us?*

Below are ways you can help  
deter crime in your neighborhood!

### CRIME PREVENTION TIPS

#### Prevent a Vehicle Burglary

- Secure all vehicle doors.
- Ensure all windows are rolled up entirely and secured.
- Remove all items from plain view of any passer by.
- Activate vehicle alarm system.
- Promote good natural surveillance by always parking in a well lit location and never parking smaller vehicles between two larger vehicles.
- Use our online interactive public mapping for any additional activity occurring in this area at [www.CrimeReports.com](http://www.CrimeReports.com) (access the website via [www.pslpd.us](http://www.pslpd.us)).
- Report all suspicious activity to police immediately.

*If you want to remain anonymous,  
please contact:*

### TREASURE COAST CRIME STOPPERS

[www.tcwatch.org](http://www.tcwatch.org)  
or call (800)273-8477

### PORT ST. LUCIE POLICE DEPT.

121 SW Port St. Lucie Blvd Bldg. C  
Port St. Lucie, FL 34884  
(772)871-5000

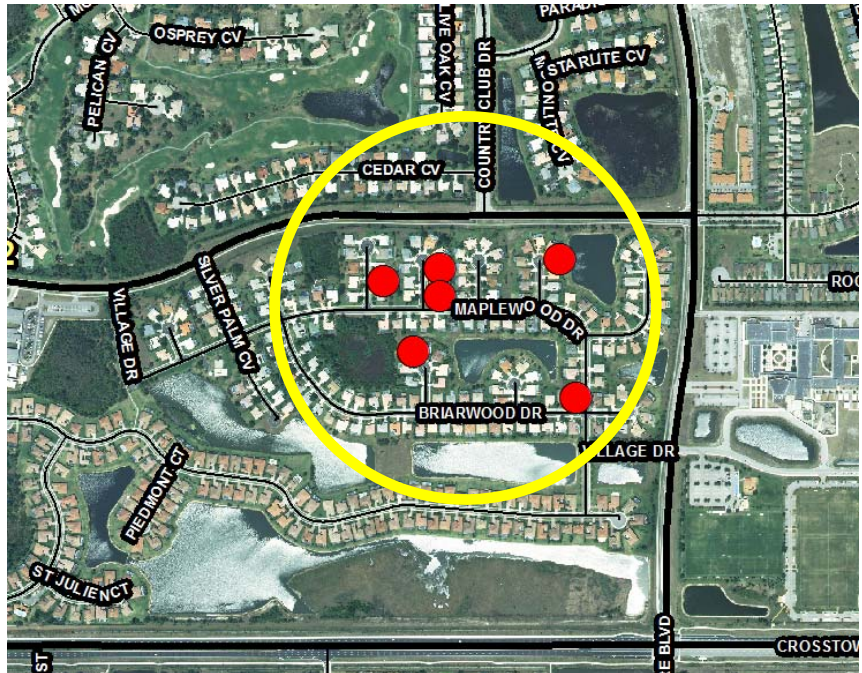
**EMERGENCY CALLS—DIAL 911**

# NEIGHBORHOOD CRIME NOTIFICATION



## WE WANT YOU TO KNOW:

The below map depicts burglary incidents that  
have occurred within an approximate .15 mile  
radius within the Heatherwood Community  
**May 31st—June 2nd, 2012.**



#### 6 Auto Burglaries

- All incidents involved vehicles with no signs of forced entry/unlocked
- Occurred in the overnight hours
- Items stolen include, a purse, wallet electronics, stereo equipment, and loose change left in the vehicle

**Our reports indicate the person or people responsible for committing  
these crimes might match the following descriptions:**

- **An individual reported seeing a older style, red Chevy pickup truck in the neighborhood, driving near residences where it appeared no one was home.**